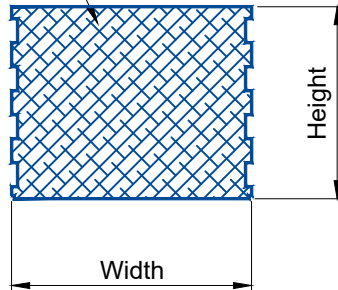


Wabo®XPE



Wabo®XPE Detail
FLOOR TO FLOOR CONDITION
NOT TO SCALE

Notes:

- 1.) Please refer to the installation guide for information on splices, terminations, transitions, and additional details concerning adjacent construction.
- 2.) Minimum and maximum values shown on dimension chart are the limits for proper system performance. Unless otherwise noted, the dimension shown at 68°F is the recommended installation joint opening.
- 3.) The system and all components are supplied to accommodate project requirements. Please consult with a WBA representative for the types and quantities of chemical components needed for proper installation.

Model No.	Seal Size		Joint Opening		"A" @		Joint Opening "A"					
	Width		Height		Midrange Temperature		Min.		Max.		Total	
	in	mm	in	mm	in	mm	in	mm	in	mm	in	mm
XPE 1250	1.250	32	2.00	51	1.00	25	0.50	13	1.63	41	1.13	29
XPE 1375	1.375	35	2.00	51	1.125	29	0.55	14	1.79	45	1.24	31
XPE 1625	1.625	41	2.00	51	1.375	35	0.65	17	2.11	54	1.46	37
XPE 2000	2.000	51	2.00	51	1.625	41	0.80	20	2.60	66	1.80	46
XPE 2375	2.375	60	2.00	51	2.00	51	0.95	24	3.09	78	2.14	54
XPE 2500	2.500	64	2.00	51	2.125	54	1.00	25	3.25	83	2.25	57
XPE 2750	2.750	70	2.00	51	2.375	60	1.10	28	3.58	91	2.48	63
XPE 3000	3.000	76	2.50	64	2.50	64	1.20	30	3.90	99	2.70	69
XPE 3250	3.250	83	2.50	64	2.75	70	1.30	33	4.23	107	2.93	74
XPE 3500	3.500	89	2.50	64	3.00	76	1.40	36	4.55	116	3.15	80
XPE 3750	3.750	95	3.00	76	3.125	79	1.50	38	4.875	124	3.375	86
XPE 4000	4.000	102	3.00	76	3.375	86	1.60	41	5.20	132	3.60	91
XPE 4500	4.500	114	3.00	76	3.75	95	1.80	46	5.85	149	4.05	103
XPE 5000	5.000	127	3.50	89	4.25	108	2.00	51	6.50	165	4.50	114

Consult your WBA Representative with your special design requirements

PROJECT NAME: -

PROJECT LOCATION: -

DRAWING DESCRIPTION:

Wabo®XPE

DATE: 01/04/2021

MODEL: XPE



Watson Bowman Acme
95 Pineview Drive Amherst, NY 14228
phone: (716) 691-7566 fax: (716) 691-9239
www.watsonbowmanacme.com

A brand of
MBCC GROUP

Information provided herein, including but not limited to, any drawing, design, photograph, graphic, or statement(s) ("Materials") are proprietary and the property of Watson Bowman Acme Corporation ("Company"). Reproduction, translation, or reduction to any electronic medium or machine readable form, in whole or part, is strictly prohibited, except for the express purpose for which it has been furnished, without prior written consent of Company. All Materials contained herein are provided by Company for information purposes only. Company reserves the right to amend or withdraw any information contained in the Materials without notice. All technical or other advice by Company, whether verbal or written, concerning products, or the use of products in specific situations ("Advice") is given by Company and is used at the Users own risk.

REVISION NO:

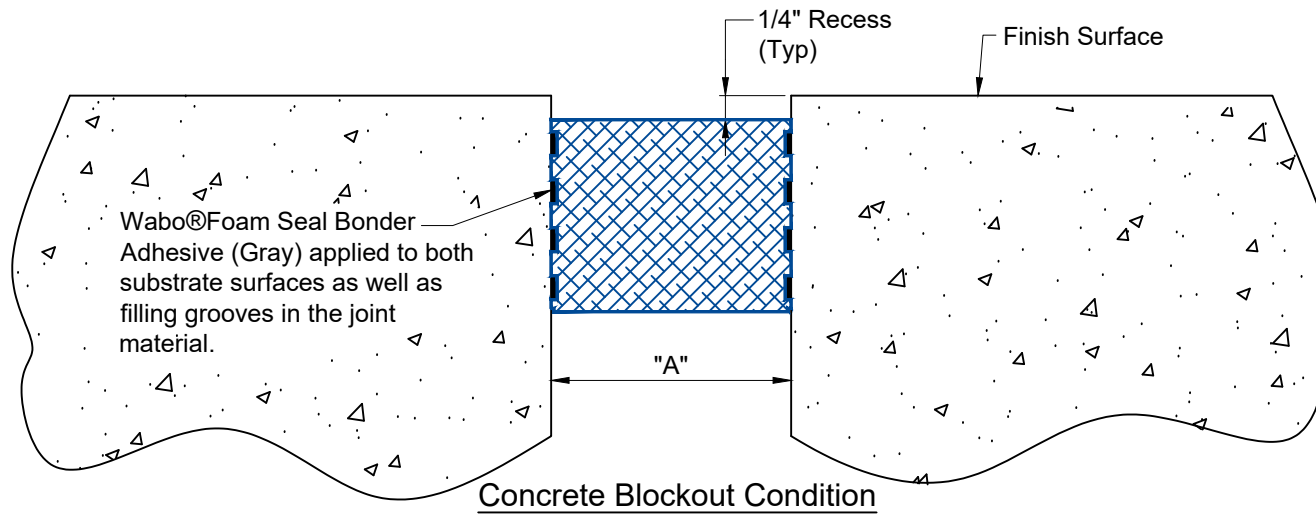
2

SHEET NO:

1 of 6

DRAWING NO:

A-32597



Notes:

- 1.) Please refer to the installation guide for information on splices, terminations, transitions, and additional details concerning adjacent construction.
- 2.) Minimum and maximum values shown on dimension chart are the limits for proper system performance. Unless otherwise noted, the dimension shown at 68°F is the recommended installation joint opening.
- 3.) The system and all components are supplied to accommodate project requirements. Please consult with a WBA representative for the types and quantities of chemical components needed for proper installation.

Model No.	Seal Size		Joint Opening "A" @ Midrange Temperature		Joint Opening "A" @ Midrange Temperature		Joint Opening "A" @ Midrange Temperature		Joint Opening "A" @ Midrange Temperature		Joint Opening "A" @ Midrange Temperature	
	Width		Height		Min.		Max.		Total			
	in	mm	in	mm	in	mm	in	mm	in	mm	in	mm
XPE 1250	1.250	32	2.00	51	1.00	25	0.50	13	1.63	41	1.13	29
XPE 1375	1.375	35	2.00	51	1.125	29	0.55	14	1.79	45	1.24	31
XPE 1625	1.625	41	2.00	51	1.375	35	0.65	17	2.11	54	1.46	37
XPE 2000	2.000	51	2.00	51	1.625	41	0.80	20	2.60	66	1.80	46
XPE 2375	2.375	60	2.00	51	2.00	51	0.95	24	3.09	78	2.14	54
XPE 2500	2.500	64	2.00	51	2.125	54	1.00	25	3.25	83	2.25	57
XPE 2750	2.750	70	2.00	51	2.375	60	1.10	28	3.58	91	2.48	63
XPE 3000	3.000	76	2.50	64	2.50	64	1.20	30	3.90	99	2.70	69
XPE 3250	3.250	83	2.50	64	2.75	70	1.30	33	4.23	107	2.93	74
XPE 3500	3.500	89	2.50	64	3.00	76	1.40	36	4.55	116	3.15	80
XPE 3750	3.750	95	3.00	76	3.125	79	1.50	38	4.875	124	3.375	86
XPE 4000	4.000	102	3.00	76	3.375	86	1.60	41	5.20	132	3.60	91
XPE 4500	4.500	114	3.00	76	3.75	95	1.80	46	5.85	149	4.05	103
XPE 5000	5.000	127	3.50	89	4.25	108	2.00	51	6.50	165	4.50	114

Consult your WBA Representative with your special design requirements

PROJECT NAME: -
PROJECT LOCATION: -
DRAWING DESCRIPTION: Wabo®XPE
DATE: 01/04/2021

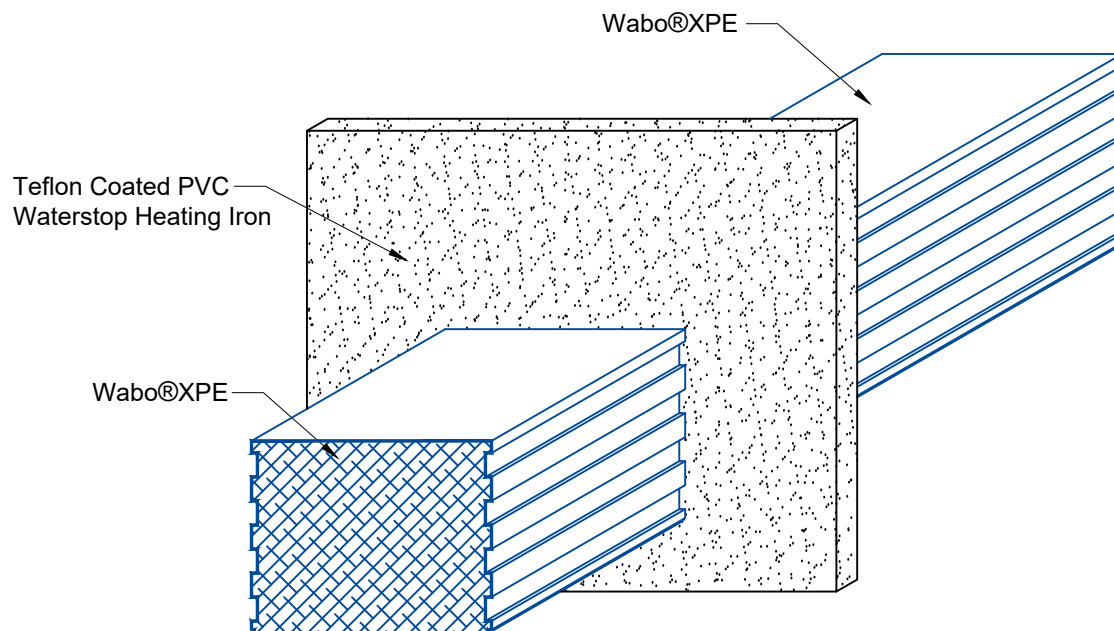


Information provided herein, including but not limited to, any drawing, design, photograph, graphic, or statement(s) ("Materials") are proprietary and the property of Watson Bowman Acme Corporation ("Company"). Reproduction, translation, or reduction to any electronic medium or machine readable form, in whole or part, is strictly prohibited, except for the express purpose for which it has been furnished, without prior written consent of Company. All Materials contained herein are provided by Company for information purposes only. Company reserves the right to amend or withdraw any information contained in the Materials without notice. All technical or other advice by Company, whether verbal or written, concerning products, or the use of products in specific situations ("Advice") is given by Company and is used at the Users own risk.

Watson Bowman Acme
95 Pineview Drive Amherst, NY 14228
phone: (716) 691-7566 fax: (716) 691-9239
www.watsonbowmanacme.com

A brand of
MBCC GROUP

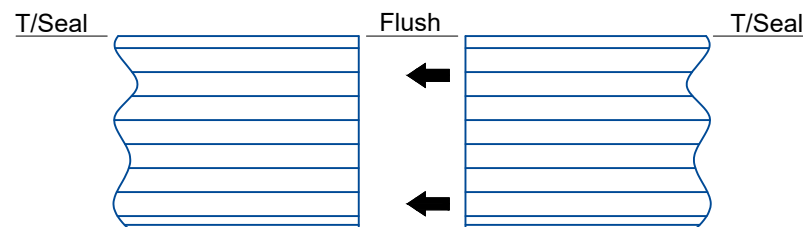
REVISION NO: 2
SHEET NO: 2 of 6
DRAWING NO: A-32597



Step 1: Hold both ends of the seal flat against the heating iron for two(2) to three(3) seconds.

Notes:

- 1.) Please refer to the installation guide for information on splices, terminations, transitions, and additional details concerning adjacent construction.
- 2.) Minimum and maximum values shown on dimension chart are the limits for proper system performance. Unless otherwise noted, the dimension shown at 68°F is the recommended installation joint opening.
- 3.) The system and all components are supplied to accommodate project requirements. Please consult with a WBA representative for the types and quantities of chemical components needed for proper installation.



Step 2: After applying seal to heat plate, align seal faces and compress together for about 1 minute.

Step 3: Allow splice area to cool before maneuvering seal and installing into joint opening.

Splicing Requirements

PROJECT NAME: -
PROJECT LOCATION: -
DRAWING DESCRIPTION: Wabo®XPE
DATE: 01/04/2021

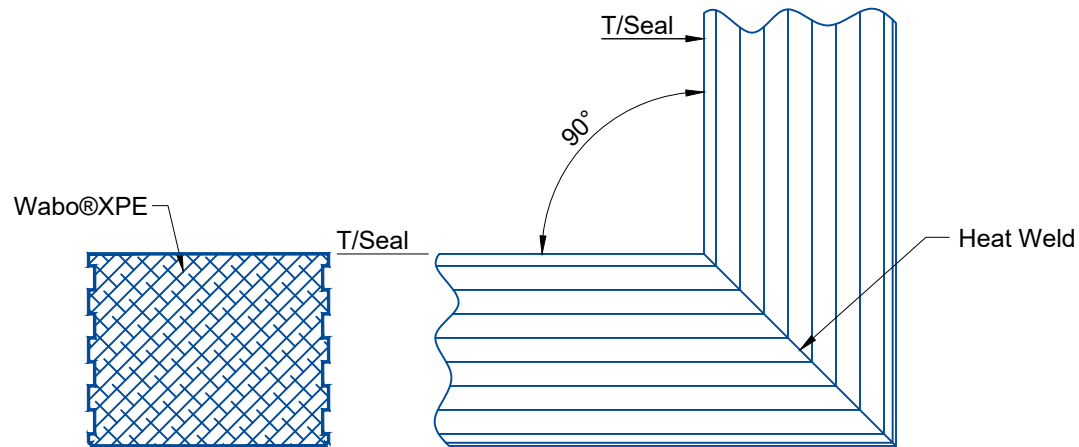


Information provided herein, including but not limited to, any drawing, design, photograph, graphic, or statement(s) ("Materials") are proprietary and the property of Watson Bowman Acme Corporation ("Company"). Reproduction, translation, or reduction to any electronic medium or machine readable form, in whole or part, is strictly prohibited, except for the express purpose for which it has been furnished, without prior written consent of Company. All Materials contained herein are provided by Company for information purposes only. Company reserves the right to amend or withdraw any information contained in the Materials without notice. All technical or other advice by Company, whether verbal or written, concerning products, or the use of products in specific situations ("Advice") is given by Company and is used at the Users own risk.

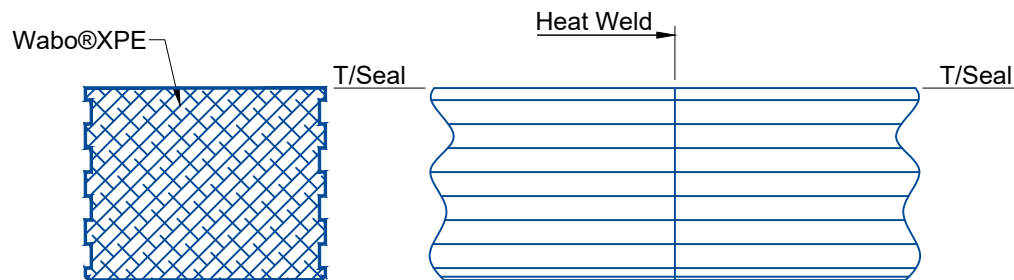
Watson Bowman Acme
95 Pineview Drive Amherst, NY 14228
phone: (716) 691-7566 fax: (716) 691-9239
www.watsonbowmanacme.com

A brand of
MBCC GROUP

REVISION NO: 2
SHEET NO: 3 of 6
DRAWING NO: A-32597

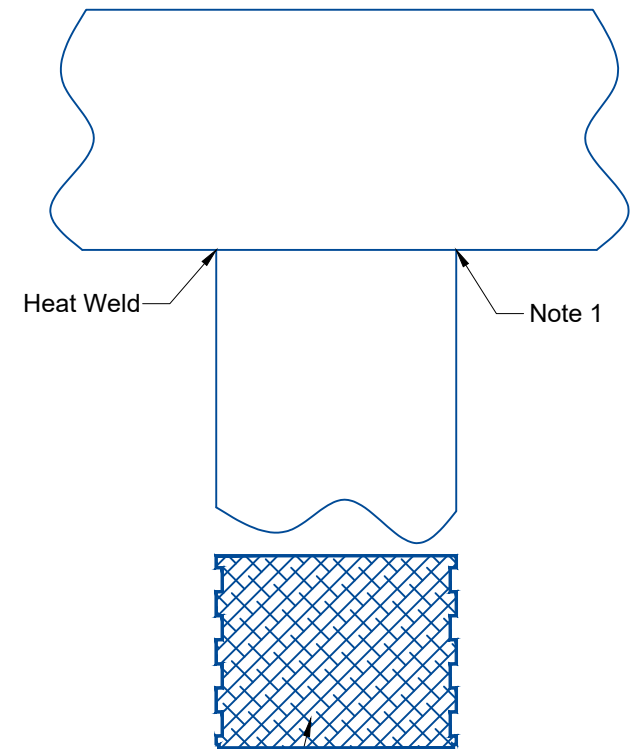


90° Upturn



Typical Butt Weld

Directional Changes



Wabo®XPE

"T" Transition

General Note:

When cutting Wabo®XPE product, WBA recommends using a hacksaw with a miter box. This will ensure a smooth straight cut.

Notes:

1. Lightly grind side of seal to remove ribs at the location where the transition is going to take place with a ZEC blade or equal. Exercise care not to damage the seal during this process. After ribs have been removed, proceed with heat welding the two seals together.

PROJECT NAME: -

PROJECT LOCATION: -

DRAWING DESCRIPTION:

Wabo®XPE

DATE: 01/04/2021

MODEL: XPE



Information provided herein, including but not limited to, any drawing, design, photograph, graphic, or statement(s) ("Materials") are proprietary and the property of Watson Bowman Acme Corporation ("Company"). Reproduction, translation, or reduction to any electronic medium or machine readable form, in whole or part, is strictly prohibited, except for the express purpose for which it has been furnished, without prior written consent of Company. All Materials contained herein are provided by Company for information purposes only. Company reserves the right to amend or withdraw any information contained in the Materials without notice. All technical or other advice by Company, whether verbal or written, concerning products, or the use of products in specific situations ("Advice") is given by Company and is used at the Users own risk.

Watson Bowman Acme
95 Pineview Drive Amherst, NY 14228
phone: (716) 691-7566 fax: (716) 691-9239
www.watsonbowmanacme.com

A brand of
MBCC GROUP

REVISION NO:

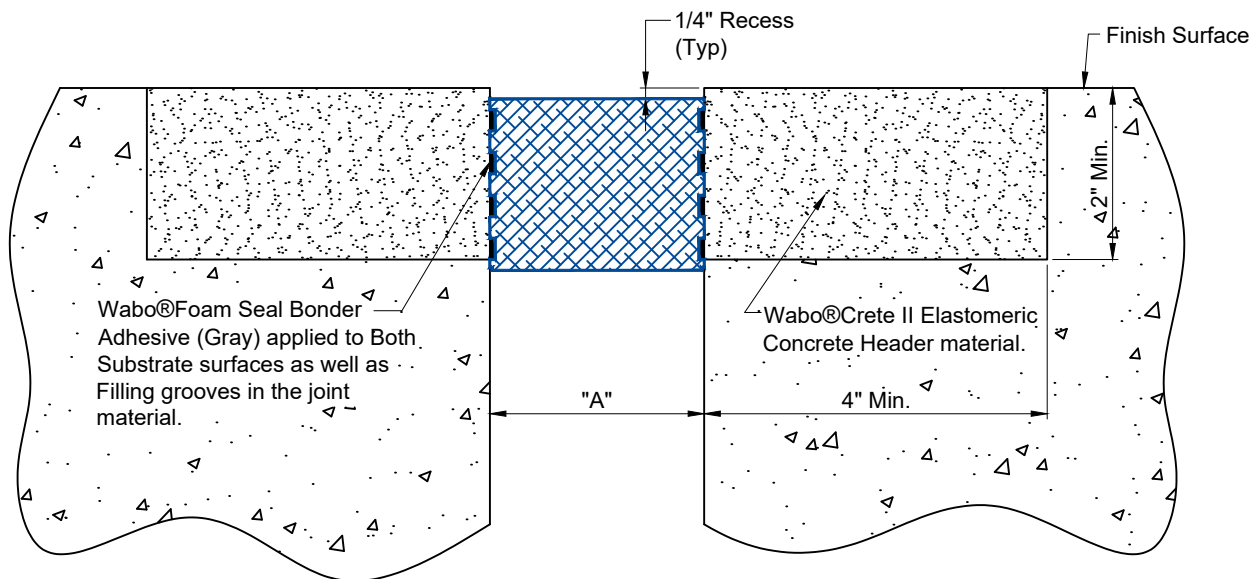
2

SHEET NO:

4 of 6

DRAWING NO:

A-32597



Wabo®XPE in Wabo®Crete II Elastomeric Concrete

Notes:

- 1.) Please refer to the installation guide for information on splices, terminations, transitions, and additional details concerning adjacent construction.
- 2.) Minimum and maximum values shown on dimension chart are the limits for proper system performance. Unless otherwise noted, the dimension shown at 68°F is the recommended installation joint opening.
- 3.) The system and all components are supplied to accommodate project requirements. Please consult with a WBA representative for the types and quantities of chemical components needed for proper installation.

Model No.	Seal Size				Joint Opening "A" @ Midrange Temperature		Joint Opening "A"					
	Width		Height		in	mm	Min.		Max.		Total	
	in	mm	in	mm			in	mm	in	mm	in	mm
XPE 1250	1.250	32	2.00	51	1.00	25	0.50	13	1.63	41	1.13	29
XPE 1375	1.375	35	2.00	51	1.125	29	0.55	14	1.79	45	1.24	31
XPE 1625	1.625	41	2.00	51	1.375	35	0.65	17	2.11	54	1.46	37
XPE 2000	2.000	51	2.00	51	1.625	41	0.80	20	2.60	66	1.80	46
XPE 2375	2.375	60	2.00	51	2.00	51	0.95	24	3.09	78	2.14	54
XPE 2500	2.500	64	2.00	51	2.125	54	1.00	25	3.25	83	2.25	57
XPE 2750	2.750	70	2.00	51	2.375	60	1.10	28	3.58	91	2.48	63
XPE 3000	3.000	76	2.50	64	2.50	64	1.20	30	3.90	99	2.70	69
XPE 3250	3.250	83	2.50	64	2.75	70	1.30	33	4.23	107	2.93	74
XPE 3500	3.500	89	2.50	64	3.00	76	1.40	36	4.55	116	3.15	80
XPE 3750	3.750	95	3.00	76	3.125	79	1.50	38	4.875	124	3.375	86
XPE 4000	4.000	102	3.00	76	3.375	86	1.60	41	5.20	132	3.60	91
XPE 4500	4.500	114	3.00	76	3.75	95	1.80	46	5.85	149	4.05	103
XPE 5000	5.000	127	3.50	89	4.25	108	2.00	51	6.50	165	4.50	114

Consult your WBA Representative with your special design requirements

PROJECT NAME:	-
PROJECT LOCATION:	-
DRAWING DESCRIPTION:	Wabo®XPE
DATE: 01/04/2021	MODEL: XPE



Watson Bowman Acme
 95 Pineview Drive Amherst, NY 14228
 phone: (716) 691-7566 fax: (716) 691-9239
www.watsonbowmanacme.com

A brand of
MBCC GROUP

Information provided herein, including but not limited to, any drawing, design, photograph, graphic, or statement(s) ("Materials") are proprietary and the property of Watson Bowman Acme Corporation ("Company"). Reproduction, translation, or reduction to any electronic medium or machine readable form, in whole or part, is strictly prohibited, except for the express purpose for which it has been furnished, without prior written consent of Company. All Materials contained herein are provided by Company for information purposes only. Company reserves the right to amend or withdraw any information contained in the Materials without notice. All technical or other advice by Company, whether verbal or written, concerning products, or the use of products in specific situations ("Advice") is given by Company and is used at the Users own risk.

REVISION NO:

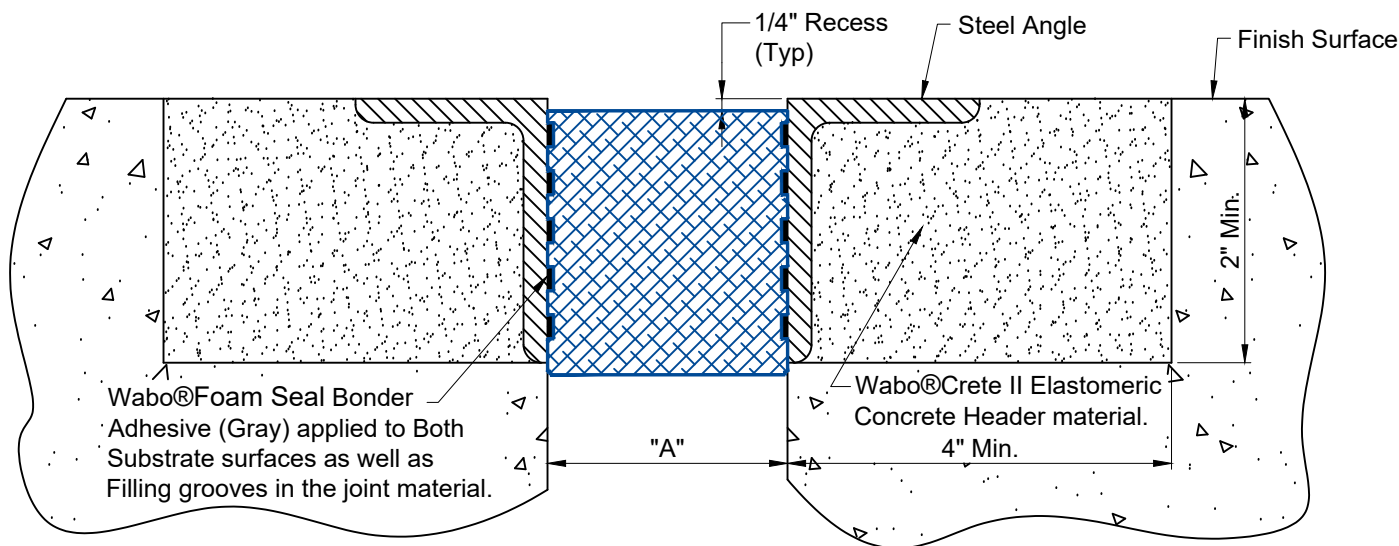
2

SHEET NO:

5 of 6

DRAWING NO:

A-32597



Wabo®XPE in Armored Edge Condition w/Wabo®Crete II Elastomeric Concrete

Model No.	Seal Size				Joint Opening "A" @ Midrange Temperature		Joint Opening "A"					
	Width		Height				Min.		Max.		Total	
	in	mm	in	mm	in	mm	in	mm	in	mm	in	mm
XPE 1250	1.250	32	2.00	51	1.00	25	0.50	13	1.63	41	1.13	29
XPE 1375	1.375	35	2.00	51	1.125	29	0.55	14	1.79	45	1.24	31
XPE 1625	1.625	41	2.00	51	1.375	35	0.65	17	2.11	54	1.46	37
XPE 2000	2.000	51	2.00	51	1.625	41	0.80	20	2.60	66	1.80	46
XPE 2375	2.375	60	2.00	51	2.00	51	0.95	24	3.09	78	2.14	54
XPE 2500	2.500	64	2.00	51	2.125	54	1.00	25	3.25	83	2.25	57
XPE 2750	2.750	70	2.00	51	2.375	60	1.10	28	3.58	91	2.48	63
XPE 3000	3.000	76	2.50	64	2.50	64	1.20	30	3.90	99	2.70	69
XPE 3250	3.250	83	2.50	64	2.75	70	1.30	33	4.23	107	2.93	74
XPE 3500	3.500	89	2.50	64	3.00	76	1.40	36	4.55	116	3.15	80
XPE 3750	3.750	95	3.00	76	3.125	79	1.50	38	4.875	124	3.375	86
XPE 4000	4.000	102	3.00	76	3.375	86	1.60	41	5.20	132	3.60	91
XPE 4500	4.500	114	3.00	76	3.75	95	1.80	46	5.85	149	4.05	103
XPE 5000	5.000	127	3.50	89	4.25	108	2.00	51	6.50	165	4.50	114

Consult your WBA Representative with your special design requirements

Notes:

- 1.) Please refer to the installation guide for information on splices, terminations, transitions, and additional details concerning adjacent construction.
- 2.) Minimum and maximum values shown on dimension chart are the limits for proper system performance. Unless otherwise noted, the dimension shown at 68°F is the recommended installation joint opening.
- 3.) The system and all components are supplied to accommodate project requirements. Please consult with a WBA representative for the types and quantities of chemical components needed for proper installation.

PROJECT NAME:	-
PROJECT LOCATION:	-
DRAWING DESCRIPTION:	Wabo®XPE
DATE: 01/04/2021	MODEL: XPE



Watson Bowman Acme
95 Pineview Drive Amherst, NY 14228
phone: (716) 691-7566 fax: (716) 691-9239
www.watsonbowmanacme.com

A brand of
MBCC GROUP

Information provided herein, including but not limited to, any drawing, design, photograph, graphic, or statement(s) ("Materials") are proprietary and the property of Watson Bowman Acme Corporation ("Company"). Reproduction, translation, or reduction to any electronic medium or machine readable form, in whole or part, is strictly prohibited, except for the express purpose for which it has been furnished, without prior written consent of Company. All Materials contained herein are provided by Company for information purposes only. Company reserves the right to amend or withdraw any information contained in the Materials without notice. All technical or other advice by Company, whether verbal or written, concerning products, or the use of products in specific situations ("Advice") is given by Company and is used at the Users own risk.

REVISION NO:

2

SHEET NO:

6 of 6

DRAWING NO:

A-32597