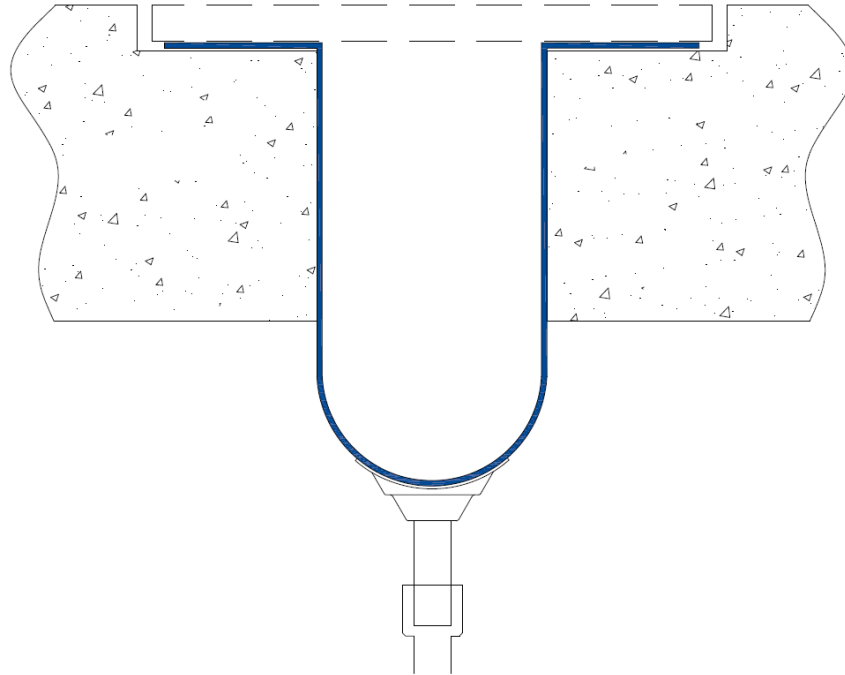


Installation Procedure

Last Updated: August 20th, 2018



Wabo®GutterFlex BOG

Moisture Barrier System

The following installation procedure is very important and must be fully understood prior to beginning any work. To ensure proper installation and performance of expansion joint system the following actions must be completed by the installing contractor. Failure to do so will affect product warranty.

- 1) Carefully read and understand installation procedure. Contact WBA's Technical Service Department at (800) 677-4922 for product assistance.
- 2) Inspect all shipments and materials for missing or damaged components and hardware. Contact Customer Service at (800) 677-4922 with WBA's order number and invoice for prompt assistance.
- 3) Inspect substrate or adjacent construction for acceptance before beginning work. Report unacceptable construction to the project manager for scheduled repair work.
- 4) Review WBA shop drawings for project specific detailed information if Engineering services were purchased at time of order.

Information provided herein, including but not limited to, any drawing, design, photograph, graphic, or statement(s) ("Materials") are proprietary and the property of Watson Bowman Acme Corp. ("Company"). Reproduction, translation, or reduction to any electronic medium or machine readable form, in whole or part, is strictly prohibited, except for the express purpose for which it has been furnished, without prior written consent of Company. All Materials contained herein are provided by Company for information purposes only. Company reserves the right to amend or withdraw any information contained in the Materials without notice. All technical or other advice by Company, whether verbal or written, concerning products, or the use of products in specific situations ("Advice") is given by Company and is used at the User's own risk.

Health & Safety

During the installation of any Watson Bowman Acme product, appropriate personal protective items should be worn at all times, including but not limited to the following:

- Proper work clothing
- Safety glasses
- Safety boots
- Gloves
- Hard hat

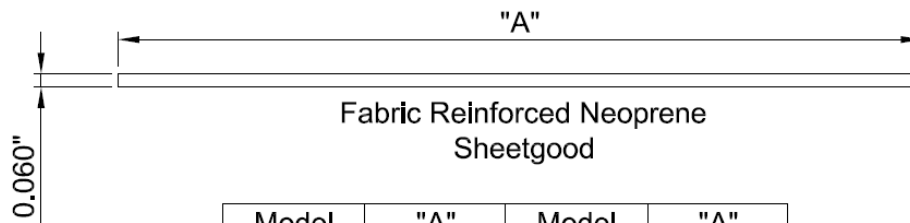


Local rules and regulations regarding safe work environments and health should be followed.

Product Components

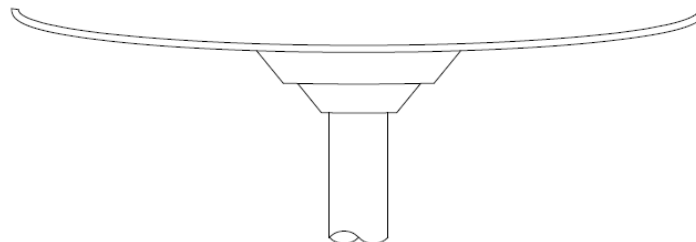
The following components are required for the installation of this product:

Components shown below vary in size depending on model of system



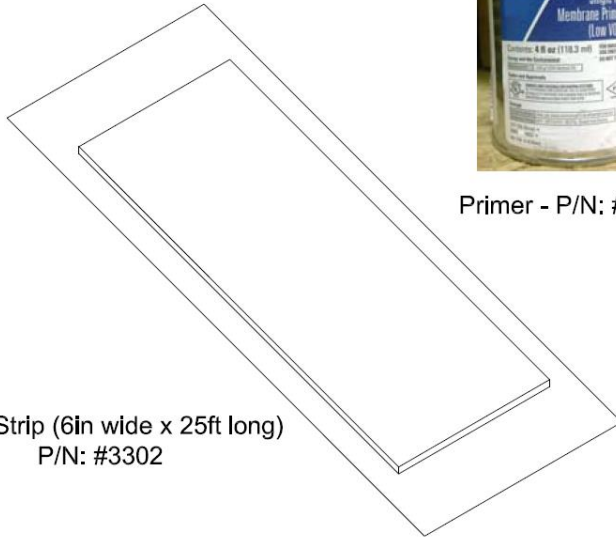
Model	"A"	Model	"A"
BOG-12N	12"	BOG-36N	36"
BOG-18N	18"	BOG-42N	42"
BOG-24N	24"	BOG-48N	48"
BOG-30N	30"		

Optional Components



Factory Assembled Drain Tube
P/n: 3095

Splicing Components



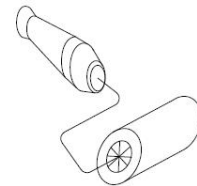
Splice Strip (6in wide x 25ft long)
P/N: #3302



Primer - P/N: #3303



Brush - P/N: #3304



Seam Roller - P/N: #3097

**Above components make up one
GutterFlex Splice Kit (P/N: #3320)**

Pre-Installation Notes

Surface Preparation: To properly achieve adhesion of sealants, all oils, grease, tars, coatings, asphalt and/or other contaminants must be removed. Sandblasting is the preferred method of cleaning the concrete. After cleaning, blow off all residue with compressed air.

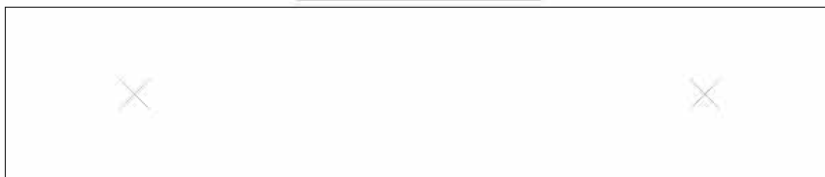
Installation

1

Optional Drain Tube Assembly (If Required): Lay out fabric reinforced Moisture Barrier and mark drain locations with a "X"

Note: Drain tube locations are based on Job Specific Locations

GutterFlex Plan View

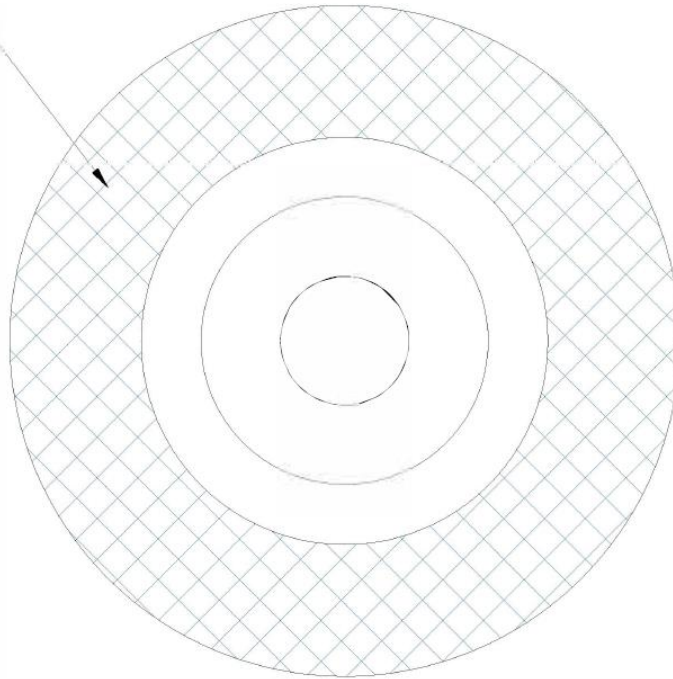


Drain Tube Assembly

2

At Marked locations, cut holes in fabric reinforced moisture barrier slightly smaller than the inside circle layer with the peel away adhesive on the drain tube assembly.

Adhesive Layer

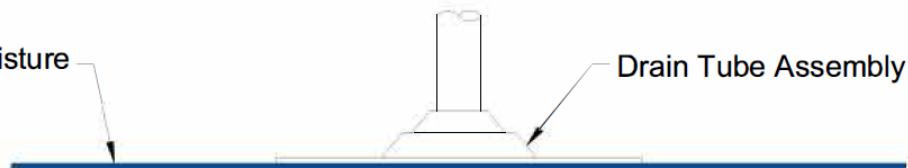


Drain Tube Plan View

3

Clean area of Moisture barrier around the cut holes with Rubbing Alcohol. Peel paper off adhesive side of Drain Tube Assembly and adhere to Moisture Barrier, making sure that it is centered over the cut holes. Utilizing a seam roller, roll over the entire adhesive area to ensure a strong bond line between the two pieces.

GutterFlex Moisture
Barrier

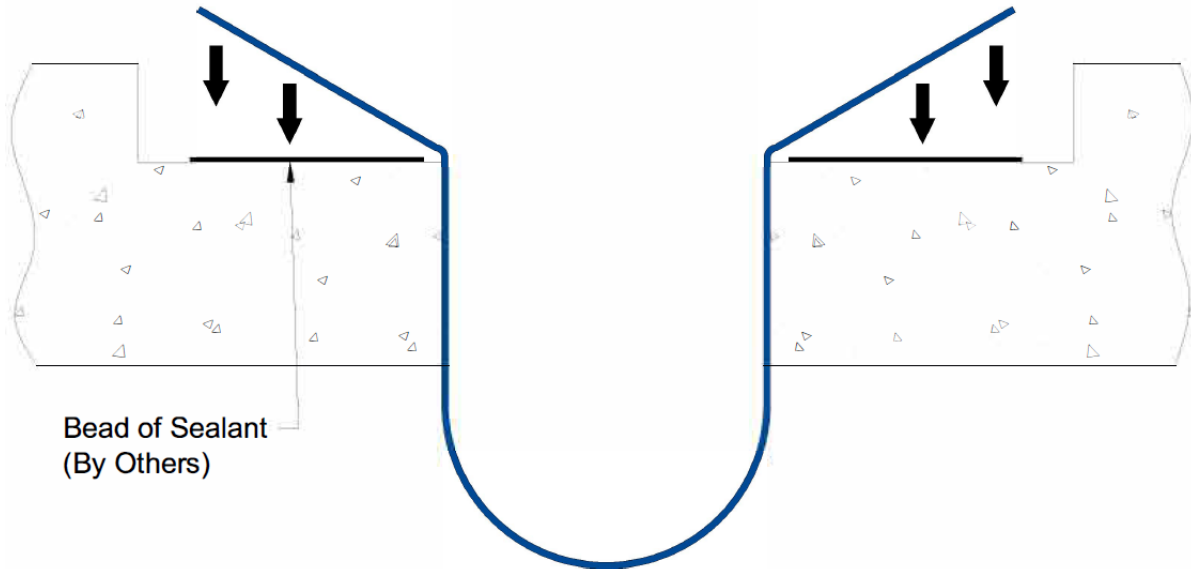


Drain Tube Assembly

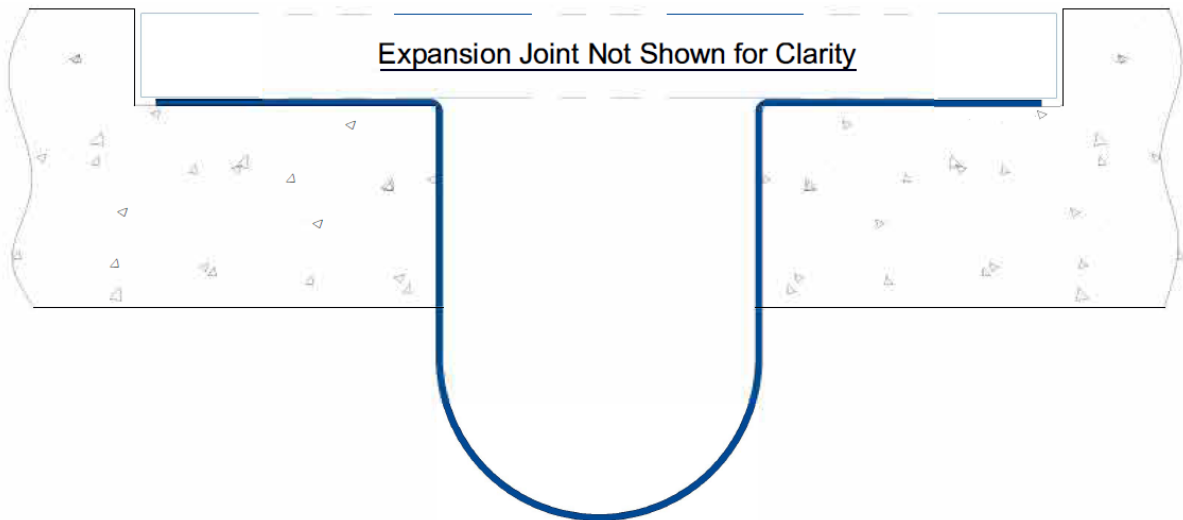
4

Set Drain Tube Assembly into the joint and lay Moisture Barrier in block out leaving enough slack for full opening of Joint. Temporarily fix Moisture Barrier in block outs until installation of Expansion Joint system.

Contractor Note: Before installing the GutterFlex Moisture Barrier, apply a serpentine bead of Sealant (By Others) on the top of the blockout where the Moisture Barrier will be installed. This is to ensure that no water will propagate between the systems.

**5**

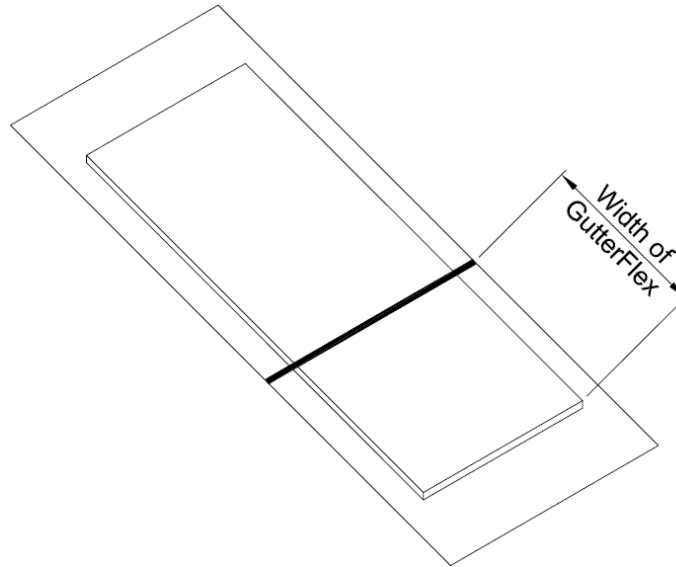
Remove temporary fixing device and install Expansion Joint. Expansion Joint will act as the anchor for the Gutterflex System. Connect optional Drain Tube assembly to the project's drain system (By Others).



Splicing Instructions

1

Cut splice strip to length that equals the width of the Fabric Reinforced Gutterflex.



2

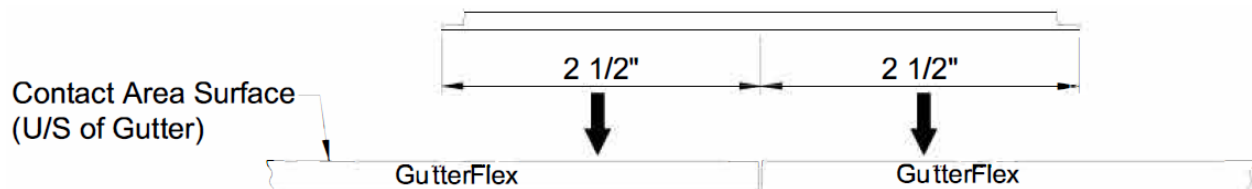
Peel backing paper from Splice Strip.



3

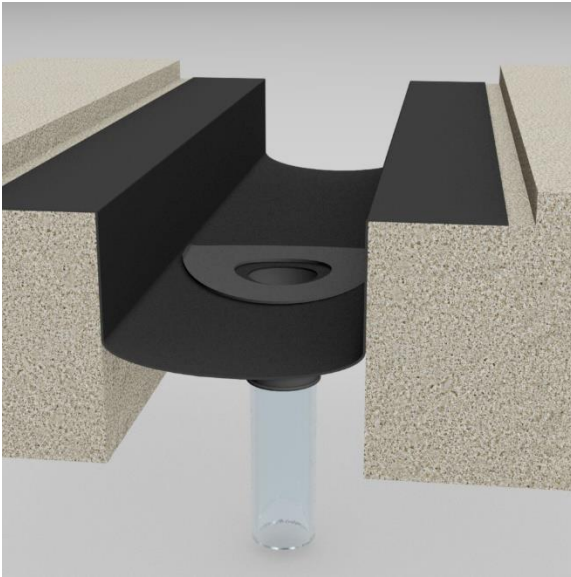
Clean contact area of GutterFlex to receive the Splice Strip with Mineral Spirits. Bring the two ends of the GutterFlex Moisture Barrier to within 1/64" of each other. Center splice strip over gap and apply to GutterFlex Moisture Barrier.

Note: After Splice strip has been applied, WBA Recommends using the Seam Roller to ensure that no air bubbles will be present and that the splice strip is well adhered to the GutterFlex. Pay special attention to all edges.



Installation Procedure

Last Updated: August 20th, 2018



Wabo®GutterFlex Splice Detail & Drain Tube Assembly Instructions

The following installation procedure is very important and must be fully understood prior to beginning any work. To ensure proper installation and performance of expansion joint system the following actions must be completed by the installing contractor. Failure to do so will affect product warranty.

- 1) Carefully read and understand installation procedure. Contact WBA's Technical Service Department at (800) 677-4922 for product assistance.
- 2) Inspect all shipments and materials for missing or damaged components and hardware. Contact Customer Service at (800) 677-4922 with WBA's order number and invoice for prompt assistance.
- 3) Inspect substrate or adjacent construction for acceptance before beginning work. Report unacceptable construction to the project manager for scheduled repair work.
- 4) Review WBA shop drawings for project specific detailed information if Engineering services were purchased at time of order.

Information provided herein, including but not limited to, any drawing, design, photograph, graphic, or statement(s) ("Materials") are proprietary and the property of Watson Bowman Acme Corp. ("Company"). Reproduction, translation, or reduction to any electronic medium or machine readable form, in whole or part, is strictly prohibited, except for the express purpose for which it has been furnished, without prior written consent of Company. All Materials contained herein are provided by Company for information purposes only. Company reserves the right to amend or withdraw any information contained in the Materials without notice. All technical or other advice by Company, whether verbal or written, concerning products, or the use of products in specific situations ("Advice") is given by Company and is used at the User's own risk.

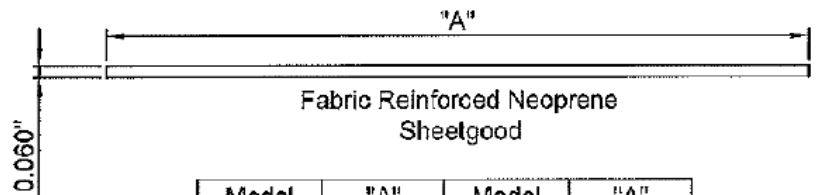
Recommended Supplies & Storage

- Tape measure
- Sharp knife
- Wabo®GutterFlex Blockout System (see below)
- Wabo®GutterFlex Splice Tabs
- Wabo®GutterFlex Splice Primer (4oz can)
- Clean Cloth
- Plywood Sheet(s) - as working surface
- Wabo®GutterFlex Seam Rolling Tool (#3097)
- Wabo®GutterFlex Drain Tube (#3095)
- Bedding Tape (#2830)
- Heat Gun
- 2 Saw Horses
- Small disposable brush

- ➔ Store material at minimum of 68°F (20°C) for a minimum of 24 hours prior to installation.
- ➔ Store material in a dry enclosed area making sure materials are off the ground and out of direct sunlight. Shaded areas recommended. See sheet #3 for additional storage information.

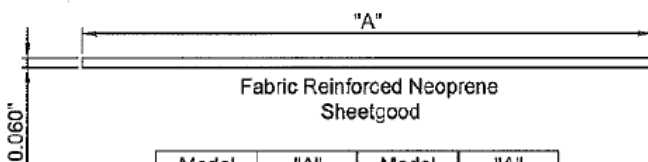
Standard Components

Custom sizes / widths also available

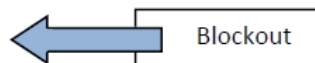
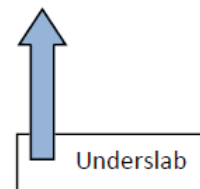


Model	"A"	Model	"A"
USG-12N	12"	USG-36N	36"
USG-18N	18"	USG-42N	42"
USG-24N	24"	USG-48N	48"
USG-30N	30"		

Components shown below vary in size depending on model of system



Model	"A"	Model	"A"
BOG-12N	12"	BOG-36N	36"
BOG-18N	18"	BOG-42N	42"
BOG-24N	24"	BOG-48N	48"
BOG-30N	30"		





Seam Rolling Tool
WBA P/N: #3097



Wabo®GutterFlex Drain Tube
WBA P/N: #3095

Clean & Prepare Work Surface

- Prior to beginning work, installer shall prepare a clean, sound work surface that will provide a stable, clean surface for the field assembly of the Wabo®GutterFlex Splice.
- Confirm joint substrate is dry, clean and ready for the Wabo®GutterFlex.
- Best practice would be a clean, dry sheet of plywood resting safely on two saw horses.



Splice Procedure

1

Place equal size pieces of Wabo®GutterFlex end-to-end on your clean, dry work surface so that a straight, even butt splice is formed.

2

Use the provided Wabo®GutterFlex Splice Primer and prep at least 3.0" of material on each side of the butt splice (see below). Fully coat (etch) the 3.0" area on each side with Primer, then allow 2-3 minutes for it to 'flash off'. Care should be used to ensure that this area remains clean.

3

Gently press the Wabo®GutterFlex Splice Tab onto the primed / etched area. Use the roller to roll out all air pock-ets for stronger bond between Splice Tab and Wabo®GutterFlex. Start at one side and work your way across the entire Splice Tab.

4

For best splice performance, apply light heat to splice tab during rolling operation (see Image #1 next page). Allow to cool before flipping Wabo®GutterFlex to opposite side.

5

Gently flip the Wabo®GutterFlex System over and repeat Steps #1 to #4 on the underside to ensure both side of the butt splice are covered with a Wabo®GutterFlex Splice Tab.

Follow us on social media for industry news, new product announcements & more:

